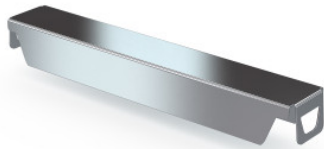


## Reinforcing beam 600 mm

P/N: 0102102 | RG-VUZ/N5/N20/N25 0600

**HUPFER**  
we make work flow

### Technical data



<b>Weight:</b>	0.3 kg
<b>Width:</b>	539 mm
<b>Depth:</b>	38 mm
<b>Height:</b>	30 mm

*Similar to illustration, technical modifications reserved. Without decoration.*

The reinforcement beam serves to optimise the stability of a closed support.

The powerful reinforcement beam made of stainless steel ensures maximum stability of a closed support. The Hupfer reinforcement beam provides a robust and reliable solution even under heavier loads. The sturdy construction made of high-quality stainless steel guarantees a long lifespan and is easy to assemble. The reinforcement beam increases the load-bearing capacity of the support and ensures optimal weight distribution. The improved efficiency of the bearing surface creates additional space for even more goods.

Time and date of the request:  
21.01.2026, 22:31:06

*All information / dimensions are approximate, technical changes reserved. © Hupfer*