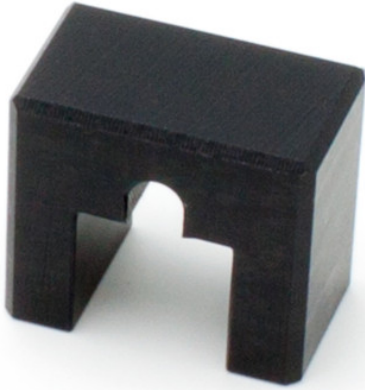


Guide for transport securing device, top

P/N: 014012446

HUPFER
we make work flow

Technical data



Width: 50 mm

Depth: 43 mm

Height: 30 mm

Similar to illustration, technical modifications reserved. Without decoration.

The transport securing guide at the top enables the secure fastening of cargo and minimises the risk of damage during transport. The transport securing guide at the top optimises efficiency during loading and unloading through a simple design and quick access.

Time and date of the request:
07.06.2025, 11:23:13

All information / dimensions are approximate, technical changes reserved. © Hupfer