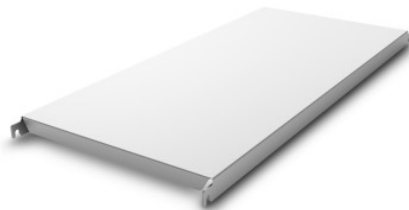


Norm 20 solid shelf 600×600 mm

P/N: 0202432 | A-GS/N20 0600/300

HUPFER
we make work flow

Technical data



Max. bay load	150
Carbon footprint (TM65 Basic Report)	28 kgCO ₂ e
Weight:	0.9 kg
Width:	600 mm
Depth:	240 mm
Height:	40 mm

Similar to illustration, technical modifications reserved. Without decoration.

Solid shelf, aluminium, made of 0.06" (1.5 mm) thick steel sheet, folded and rebated inwards by 1.6" (40 mm) at the long side and folded by 1.1" (28 mm) at the face side. Additional U-shaped profile as reinforcement strut on the underside with 47-59" (1200-1500 mm) long shelves at a depth of 19.7" and 23.6" (500 and 600 mm).