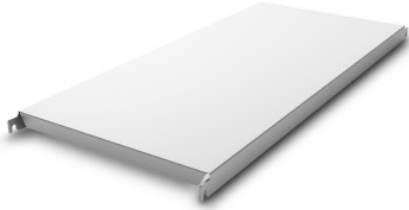


# Norm 20 solid shelf 700×500 mm

P/N: 0202562 | A-GS/N20 0700/500

**HUPFER**  
we make work flow

## Technical data



<b>Max. bay load</b>	150
<b>Carbon footprint (TM65 Midlevel Report)</b>	37 kgCO <sub>2</sub> e
<b>TM65 Midlevel Report</b>	<a href="#">Link to the certificate</a>
<b>Weight:</b>	2 kg
<b>Width:</b>	700 mm
<b>Depth:</b>	440 mm
<b>Height:</b>	40 mm

*Similar to illustration, technical modifications reserved. Without decoration.*

The closed support made of anodised aluminium of the Norm 20 shelf provides a secure and hygienic storage surface for high load capacities. It is suitable for use at ambient temperatures of -30°C.

The effortlessly hook-on, closed support made of anodised aluminium provides a secure, easy-to-handle, and easy-to-clean storage surface. Despite its low weight, this support of the Norm 20 shelf can bear high loads. Temperatures of -30°C also pose no problem, even in the long term.

- Closed design in anodised aluminium with low weight ensures easy handling, safe, hygienic storage, and clear access at all times
- High-quality workmanship using premium aluminium enables perfect hygiene and easy cleaning
- Valuable materials ensure sustainability and preservation of value
- Robust construction guarantees high load capacity
- Modular system allows for easy handling from assembly to cleaning with minimal effort

Time and date of the request:  
25.04.2026, 12:15:28

*All information / dimensions are approximate, technical changes reserved. © Hupfer*