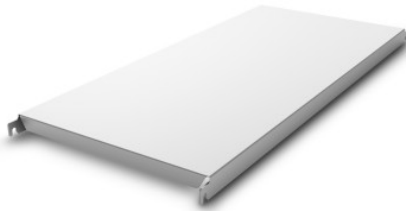


NORM20 solid shelf

P/N: 0202602 | A-GS/N20 0900/500

HUPFER
we make work flow

Technical data



Max. bay load	150
Weight:	2.155 kg
Width:	900 mm
Depth:	440 mm
Height:	40 mm

Similar to illustration, technical modifications reserved. Without decoration.

Solid shelf, aluminium, made of 0.06" (1.5 mm) thick steel sheet, folded and rebated inwards by 1.6" (40 mm) at the long side and folded by 1.1" (28 mm) at the face side. Additional U-shaped profile as reinforcement strut on the underside with 47-59" (1200-1500 mm) long shelves at a depth of 19.7" and 23.6" (500 and 600 mm).

Time and date of the request:
15.11.2024, 22:16:24

All information / dimensions are approximate, technical changes reserved. © Hupfer