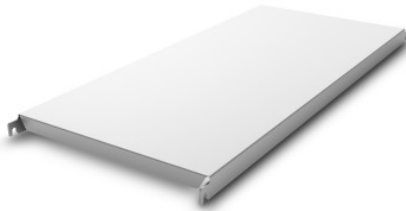


Norm 20 solid shelf 1500×500 mm

P/N: 0202883 | A-GS/N20 1500/500

HUPFER
we make work flow

Technical data



Max. bay load	100
Carbon footprint (TM65 Midlevel Report)	83 kgCO ₂ e
TM65 Midlevel Report	Link to the certificate
Weight:	4 kg
Width:	1500 mm
Depth:	440 mm
Height:	49 mm

Similar to illustration, technical modifications reserved. Without decoration.

The closed support made of anodised aluminium of the Norm 20 shelf provides a secure and hygienic storage surface for high load capacities. It is suitable for use at ambient temperatures of -30°C.

The effortlessly hook-on, closed support made of anodised aluminium provides a secure, easy-to-handle, and easy-to-clean storage surface. Despite its low weight, this support of the Norm 20 shelf can bear high loads. Temperatures of -30°C also pose no problem, even in the long term.

- Closed design in anodised aluminium with low weight ensures easy handling, safe, hygienic storage, and clear access at all times
- High-quality workmanship using premium aluminium enables perfect hygiene and easy cleaning
- Valuable materials ensure sustainability and preservation of value
- Robust construction guarantees high load capacity
- Modular system allows for easy handling from assembly to cleaning with minimal effort

Time and date of the request:
28.01.2026, 15:13:24

All information / dimensions are approximate, technical changes reserved. © Hupfer