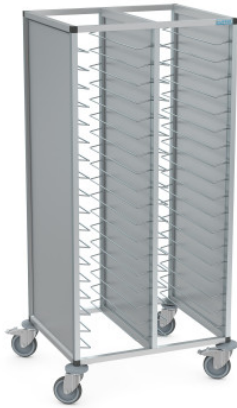


Tray clearing trolley for 2 × 18 GN trays

P/N: 0222166-N | TAWALU 2/36 GN 75-L

HUPFER
we make work flow



Technical data

Capacity:	36 GN 1/1 trays
Modular dimension:	75 mm
Insertion type:	Lengthwise insertion
Payload:	120 kg
Width:	820 mm
Depth:	687 mm
Height:	1635 mm

Similar to illustration, technical modifications reserved. Without decoration.

Tray clearing trolleys for insertion and transport of trays with dirty crockery.

Trolley in robust and hygienic tubular frame design made of anodised aluminium with polymer connection elements and fixed side panels in various decors. Tray racks, fixed to the tube frame, made of 6 mm diameter solid stainless steel material with push through protection on both sides according to DIN EN 18867-2. Four polymer disc bumpers provide collision protection, and protect both the sides of the trolley and the surrounding walls particularly effectively from damage. Trolley mobile on 4 swivel castors \varnothing 125 mm with bolt hole attachment, 2 of them with total brakes.

The Hupfer tray clearing trolley TAWALU provides rust-free, stainless steel tray shelf rails, reinforced disc bumpers for particularly effective protection of walls from dirt and damage, as well as a very wide range of side panels and other equipment features in comparison to other products.

Time and date of the request:
23.11.2024, 06:12:49

All information / dimensions are approximate, technical changes reserved. © Hupfer