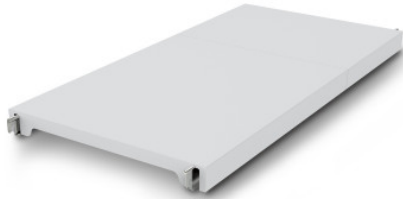


NORM12 solid shelf

P/N: 0602379 | A-GS/N12 1300/600

HUPFER
we make work flow

Technical data



Max. bay load	100
Carbon footprint (TM65 Basic Report)	71 kgCO ₂ e
Weight:	5 kg
Width:	1300 mm
Depth:	584 mm
Height:	53 mm

Similar to illustration, technical modifications reserved. Without decoration.

Closed plate made of polystyrene segments on aluminium support beams.

The effortlessly attachable, closed plastic tray offers a lightweight, secure, and very easy-to-clean surface that can even be washed in the dishwasher. Despite its low weight, this tray from the Norm 12 shelf can support high loads. Temperatures of -30°C are not a problem even in the long term. The materials used are sustainable, 100% recyclable, and so valuable that Hupfer guarantees today to buy back your entire shelf at the end of its useful life.

- Closed design in plastic with low weight ensures safe, hygienic storage and clear access at all times.
- High-quality processing of premium plastic enables perfect hygiene and easy cleaning, even in the dishwasher.
- Valuable materials ensure sustainability and value retention.
- Stable construction guarantees high load capacity.
- Modular system allows for easy handling from assembly to cleaning with minimal effort.

Time and date of the request:
12.04.2025, 06:40:41

All information / dimensions are approximate, technical changes reserved. © Hupfer