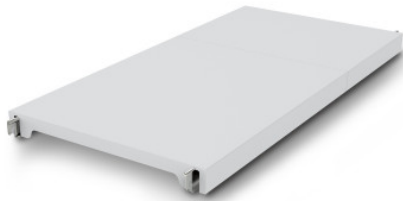


NORM12 solid shelf

P/N: 0602549 | A-GS/N12 0800/600

HUPFER
we make work flow

Technical data



Max. bay load	200
Carbon footprint (TM65 Basic Report)	37 kgCO ₂ e
Weight:	3 kg
Width:	800 mm
Depth:	584 mm
Height:	53 mm

Similar to illustration, technical modifications reserved. Without decoration.

Closed support made of polystyrene segments on aluminium bearer beams.

The effortlessly attachable, enclosed plastic surface provides a lightweight, safe, and very easy-to-clean storage area, even in the dishwasher. Despite its low weight, this surface of the Norm 12 shelf can support high loads. Temperatures of -30°C are not a problem even in the long term. The materials used are sustainable, 100% recyclable, and so valuable that Hupfer guarantees today to buy back your entire shelf at the end of its service life.

- Closed design in plastic with low weight ensures safe, hygienic storage and clear access at all times. - Quality workmanship of high-quality plastic enables perfect hygiene and easy cleaning, even in the dishwasher. - Valuable materials ensure sustainability and value retention. - Sturdy construction guarantees high load capacity. - Modular system ensures easy handling from assembly to cleaning with minimal effort.

Time and date of the request:
17.04.2025, 14:36:31

All information / dimensions are approximate, technical changes reserved. © Hupfer