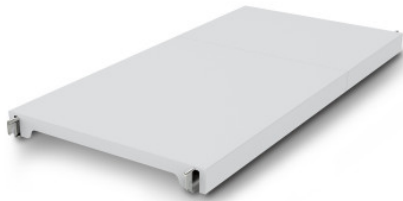


NORM12 solid shelf

P/N: 0602589 | A-GS/N12 0900/400

HUPFER
we make work flow

Technical data



Max. bay load	200
Carbon footprint (TM65 Basic Report)	35 kgCO ₂ e
Weight:	2 kg
Width:	900 mm
Depth:	384 mm
Height:	53 mm

Similar to illustration, technical modifications reserved. Without decoration.

Closed support made of polystyrene segments on aluminium support beams.

The effortlessly attachable, closed plastic insert provides a lightweight, secure, and very easy-to-clean surface that can even be washed in the dishwasher. This insert for the Norm 12 shelf can support high loads despite its low weight. Temperatures of -30°C are not a problem even in the long term. The materials used are sustainable, 100% recyclable, and so valuable that Hupfer guarantees today to buy back your entire shelf at the end of its service life.

- Closed design in plastic with low weight ensures safe, hygienic storage and clear access at all times
- Quality workmanship of high-quality plastic enables perfect hygiene and easy cleaning, even in the dishwasher
- Valuable materials ensure sustainability and value retention
- Stable construction guarantees high load capacity
- Modular system ensures easy handling from assembly to cleaning with minimal effort

Time and date of the request:
16.04.2025, 18:34:27

All information / dimensions are approximate, technical changes reserved. © Hupfer