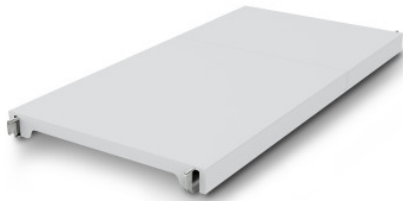


Norm 12 solid shelf 900×400 mm

P/N: 0602609 | A-GS/N12 0900/500

HUPFER
we make work flow

Technical data



Max. bay load	200
Carbon footprint (TM65 Basic Report)	39 kgCO ₂ e
Weight:	3 kg
Width:	900 mm
Depth:	484 mm
Height:	53 mm

Similar to illustration, technical modifications reserved. Without decoration.

Closed support made of polystyrene segments on aluminium support beams.

The effortlessly attachable, enclosed plastic tray offers a lightweight, secure, and very easy-to-clean surface, even in the dishwasher. This tray for the Norm 12 shelf can support high loads despite its low weight. Temperatures of -30°C are not a problem even in the long term. The materials used are sustainable, 100% recyclable, and so valuable that Hupfer already guarantees to buy back your entire shelf at the end of its service life.

- Closed design in plastic with low weight ensures safe, hygienic storage and clear access at all times
- Quality processing of high-quality plastic enables perfect hygiene and easy cleaning even in the dishwasher
- Valuable materials ensure sustainability and value retention
- Stable construction guarantees high load capacity
- Modular system ensures easy handling from assembly to cleaning with minimal effort

Time and date of the request:
09.06.2025, 15:01:49

All information / dimensions are approximate, technical changes reserved. © Hupfer