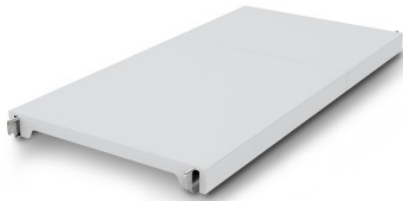


# NORM12 solid shelf

P/N: 0602679 | A-GS/N12 1000/500

**HUPFER**  
we make work flow

## Technical data



<b>Max. bay load</b>	200
<b>Carbon footprint (TM65 Basic Report)</b>	43 kgCO <sub>2</sub> e
<b>Weight:</b>	3 kg
<b>Width:</b>	1000 mm
<b>Depth:</b>	484 mm
<b>Height:</b>	53 mm

*Similar to illustration, technical modifications reserved. Without decoration.*

Closed support made of polystyrene segments on aluminium support beams.

The effortlessly attachable, closed plastic insert provides a lightweight, secure, and very easy-to-clean surface, even dishwasher-safe. This insert for the Norm 12 shelf can support high loads despite its low weight. Temperatures of -30°C are also not a problem in the long term. The materials used are sustainable, 100% recyclable, and so valuable that Hupfer already guarantees to buy back your entire shelf at the end of its service life.

- Closed design in plastic with low weight ensures safe, hygienic storage and clear access at all times
- Quality workmanship of high-quality plastic allows for perfect hygiene and easy cleaning even in the dishwasher
- Valuable materials ensure sustainability and value retention
- Stable construction guarantees high load capacity
- Modular system ensures easy handling from assembly to cleaning with minimal effort

Time and date of the request:  
06.04.2025, 04:06:51

*All information / dimensions are approximate, technical changes reserved. © Hupfer*