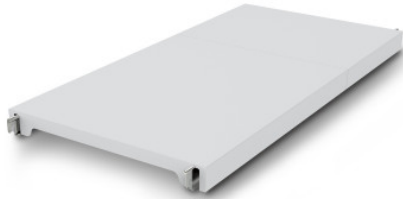


NORM12 solid shelf

P/N: 0602749 | A-GS/N12 1200/500

HUPFER
we make work flow

Technical data



Max. bay load	150
Carbon footprint (TM65 Basic Report)	61 kgCO ₂ e
Weight:	4 kg
Width:	1200 mm
Depth:	484 mm
Height:	53 mm

Similar to illustration, technical modifications reserved. Without decoration.

Closed support made of polystyrene segments on aluminium carrier beams.

The effortlessly attachable, closed plastic tray offers a lightweight, secure, and very easy-to-clean surface, even dishwasher safe. Despite its low weight, this tray of the Norm 12 shelf can hold high loads. Temperatures of -30°C are also not a problem in the long term. The materials used are sustainable, 100% recyclable, and so valuable that Hupfer already guarantees to buy back your entire shelf at the end of its useful life.

- Closed design in plastic with low weight ensures safe, hygienic storage and clear access at all times
- Quality processing of high-quality plastic enables perfect hygiene and easy cleaning, even in the dishwasher
- Valuable materials ensure sustainability and value retention
- Stable construction guarantees high load capacity
- Modular system ensures easy handling from assembly to cleaning with minimal effort

Time and date of the request:
13.04.2025, 02:49:44

All information / dimensions are approximate, technical changes reserved. © Hupfer