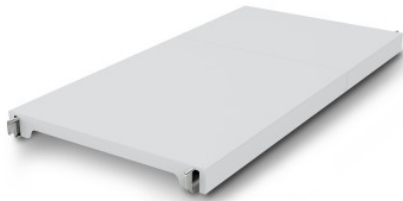


NORM12 solid shelf

P/N: 0602889 | A-GS/N12 1500/500

HUPFER
we make work flow

Technical data



Max. bay load	100
Carbon footprint (TM65 Basic Report)	77 kgCO ₂ e
Weight:	5 kg
Width:	1500 mm
Depth:	484 mm
Height:	53 mm

Similar to illustration, technical modifications reserved. Without decoration.

Closed support made of polystyrene segments on aluminium carrier beams.

The effortlessly attachable, closed plastic insert provides a lightweight, secure, and very easy-to-clean surface, even in the dishwasher. This insert of the Norm 12 shelf can support high loads despite its low weight. Temperatures of -30°C are also not a problem even in the long term. The materials used are sustainable, 100% recyclable, and so valuable that Hupfer guarantees today to buy back your complete shelf at the end of its service life.

- Closed design in plastic with low weight ensures safe, hygienic storage and clear access at all times. - High-quality processing of premium plastic enables perfect hygiene and easy cleaning, even in the dishwasher. - Valuable materials ensure sustainability and value retention. - Sturdy construction guarantees high load capacity. - Modular system ensures easy handling from assembly to cleaning with minimal effort.

Time and date of the request:
13.04.2025, 04:12:24

All information / dimensions are approximate, technical changes reserved. © Hupfer