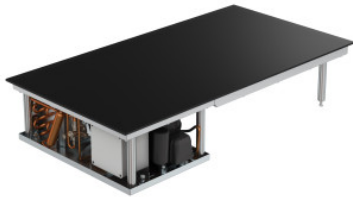


Hot and cold plate GN 1/1

P/N: 8900213 | KWP GLA KA GN 1/1

HUPFER
we make work flow

Technical data



Similar to illustration, technical modifications reserved. Without decoration.

Payload:	9 kg
Capacity:	1840 W
Cooling capacity:	340 W
Nominal current:	8,0 A
Protection class:	Class I
Frequency:	50 Hz
Weight:	24 kg
Width:	330 mm
Depth:	530 mm
Height:	202 mm

Hot and cold plate for the presentation and serving of hot and cold food. Device for installation in a counter or mobile bain marie.

High-quality stainless steel unit in stable, self-supporting and hygienic design. A hot and cold plate with a cover plate that ensures optimum temperature distribution due to its excellent temperature distribution is integrated in the cover. The use of a control system with digitally programmable temperatures and compressor cooling technology on the one hand and self-regulating PTC heating elements with a short heat-up phase and a constant linear temperature curve on the other hand additionally enables a fast change between cold and hot operation in the range from -5°C to +140° C.

Time and date of the request:
10.05.2026, 21:05:48

All information / dimensions are approximate, technical changes reserved. © Hupfer